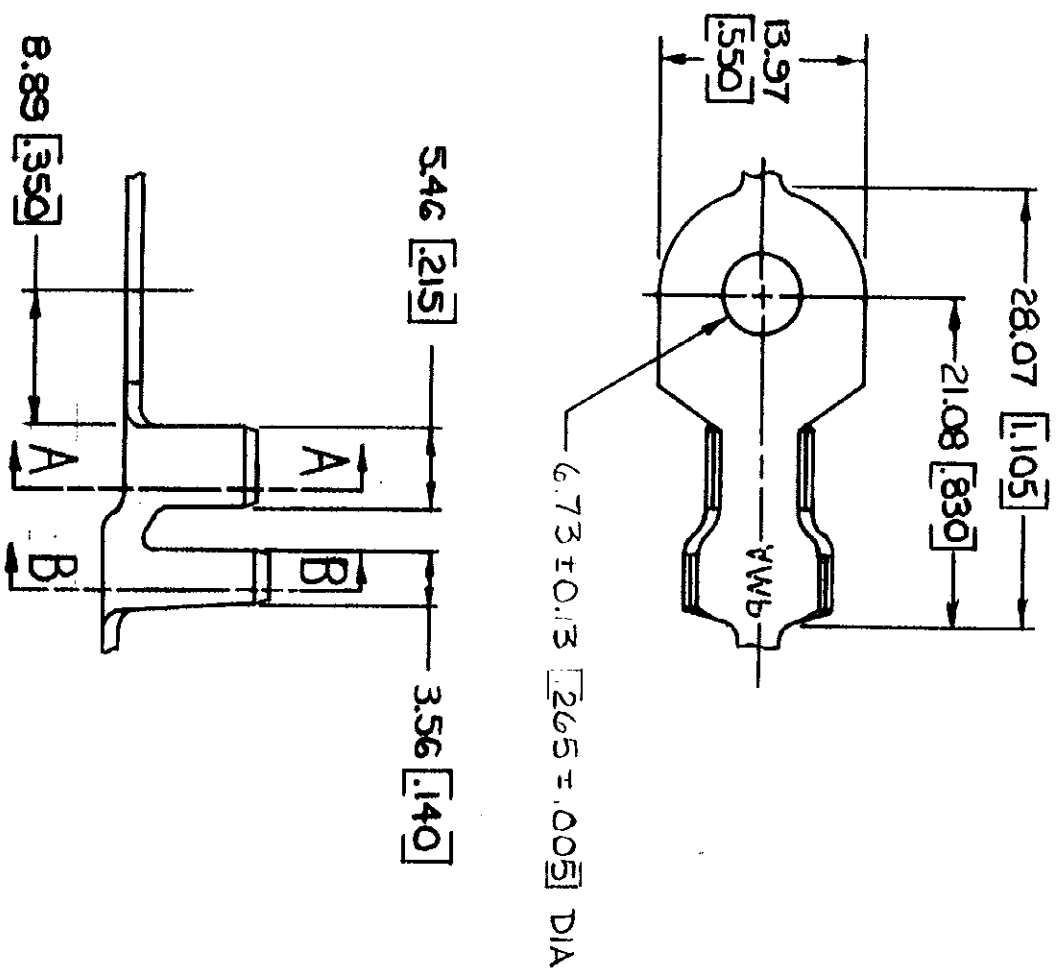
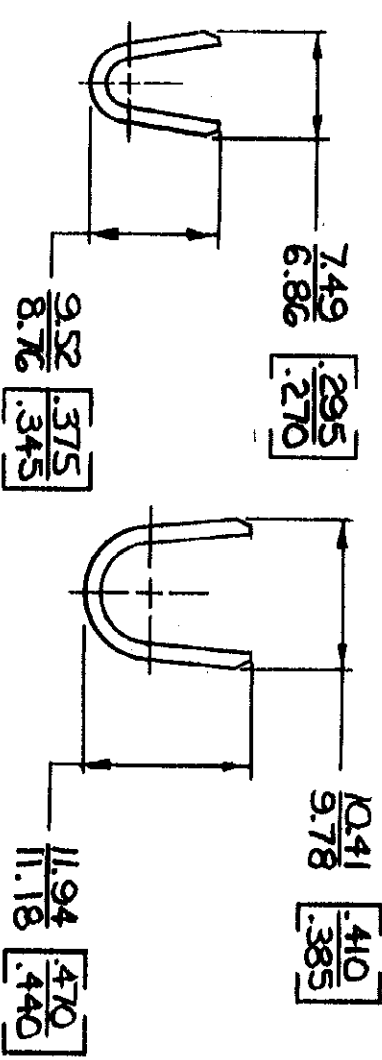


© COPYRIGHT 1964 BY AMP INCORPORATED, HARRISBURG, PA.
 ALL INTERNATIONAL RIGHTS RESERVED. AMP INCORPORATED PRODUCTS
 COVERED BY U. S. AND FOREIGN PATENTS AND/OR PATENTS PENDING.



1. CONTINUOUS STRIP ON REELS.
 2. DIMENSIONS IN BRACKETS ARE IN INCHES.

REVISIONS			DATE	APPROVED
P	ZONE	LTR	DESCRIPTION	
✓		J	REDRAWN & REVISED	A-3943
				4/22/78
				55



MATERIAL	SEE TABLE	CONTRACT NO.	NAME
FINISH	SEE TABLE	DRGN APPD	SIZE
STUD SIZE	M6	OTHER APPD	CODE IDENT NO
INSULATION RANGE	5.59 - 8.00 [220 - .315]		DRAWING NO
WIRE RANGE	5.0 - 8.5 mm ² [10 - 8]		41809
FINISH	TIN		PART NO
MATERIAL	COPPER		



RING

METRIC

CUSTOMER DRAWING